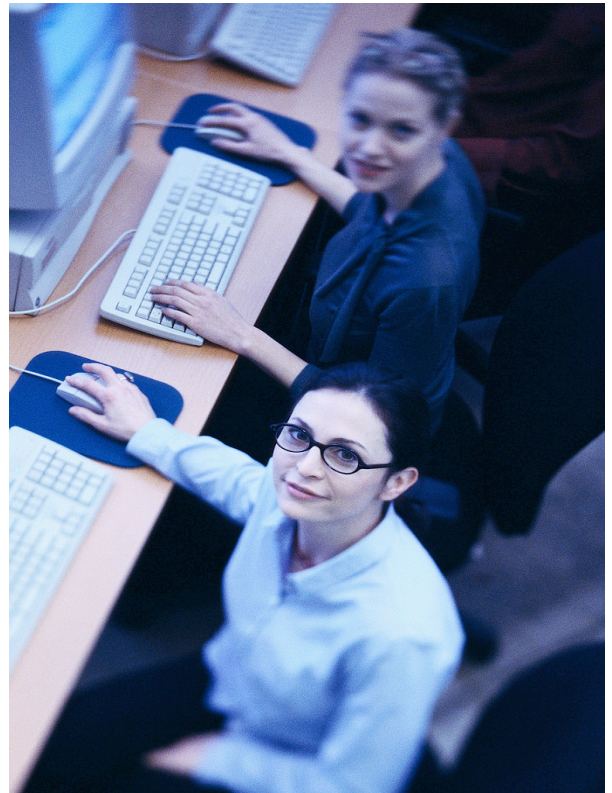


VDU Training

Every Company, no matter how large or small, employ staff who use computers for substantial parts of the day. It is a legal requirement to ensure the operator and his/her surroundings meet the legal requirements that ensure no long term injuries can develop. Are you providing that cover? Do your staff know how to work safely?

Whittaker Associates are offering a basic introduction to VDU use or a targeted course tailored to your workplace requirements, which would include individual workplace audits.



Course Duration: Half a day or 1 Day
(depending on content)

Venue: Customer Premises or a location of your choice

Course Content:

- Introduction to Legal Background
- Responsibility of the Employee
- Work Space Requirements
- How to sit at the computer
- Preventing long term injuries

For Further Information on this course please contact Whittaker Associates.



Tel: (01527) 877172
Fax: (01527) 837173
email : info@watraining.co.uk



Or Visit our Website where more details on other courses are available.

www.watraining.co.uk